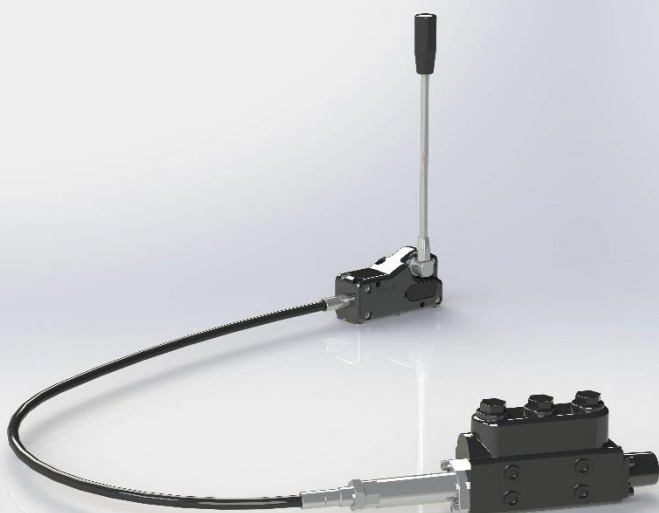


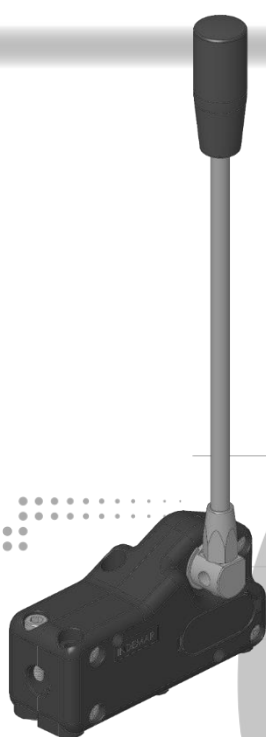
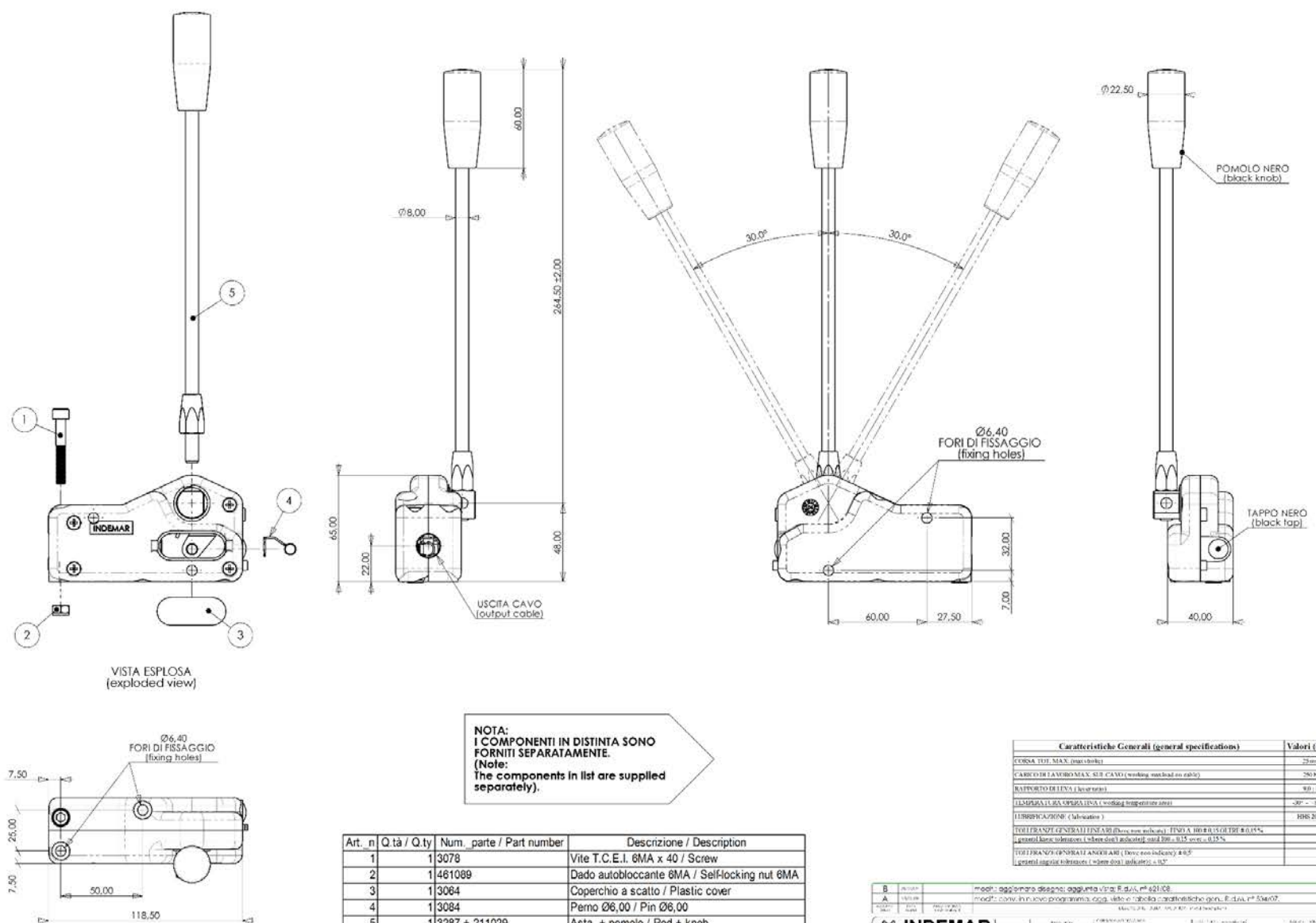
REMOTE CONTROLS CATALOGUE



INDEX

1. Single Levers
2. Joysticks
3. Pedals
4. Cables and Fittings
5. Other Controls

1. Single Levers



Description: single lever, typical RVC (Remote Valve Control)

Features: Zamak die cast, compact and robust, stackable, spring loaded center position

Weight: 0,8 Kg (1,75 lb)

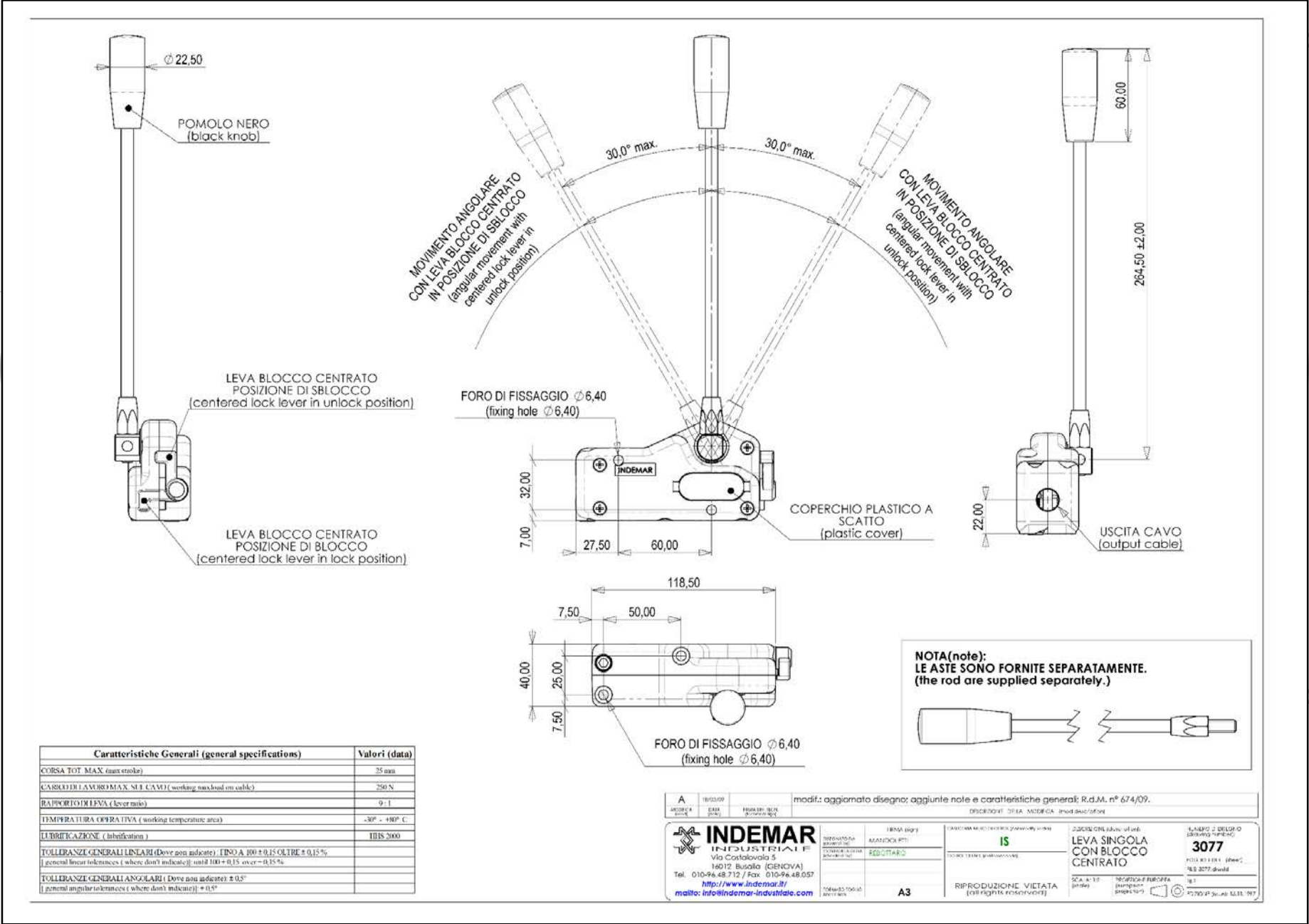
Sizes (body): 118x65x40 mm (4,65x2,5x1,6 inch)

Total Stroke: 25 mm (1 inch)

Max Load: 250 N (56 lb)

Versions: - only body, without stick code 3120

- with short stick code 3402



Description: single lever, same as 3047, but with central lock

Features: Zamak die cast, compact and robust, stackable, spring loaded center position

Weight: 0,90 Kg (1,98 lb)

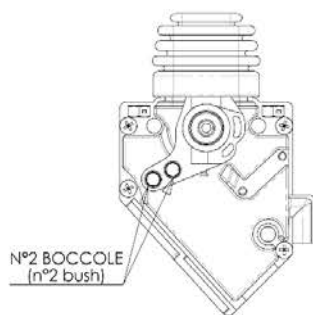
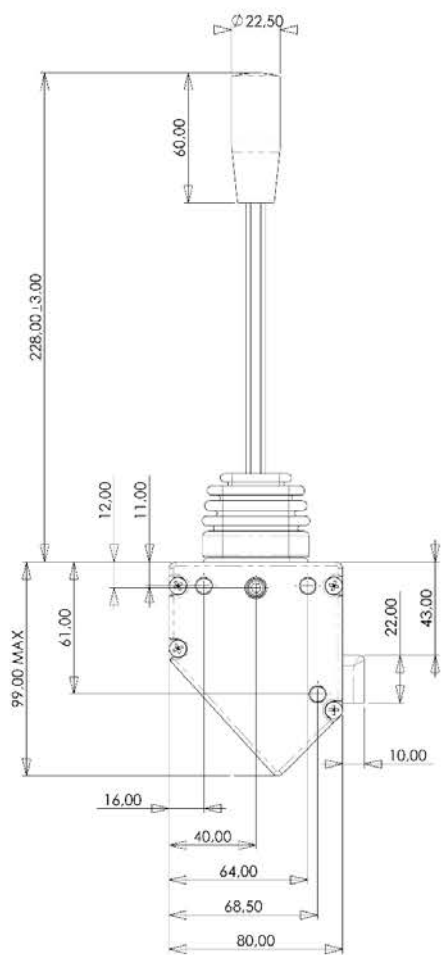
Sizes (body): 118x65x40 mm (4,65x2,5x1,6 inch)

Total Stroke: 25 mm (1 inch)

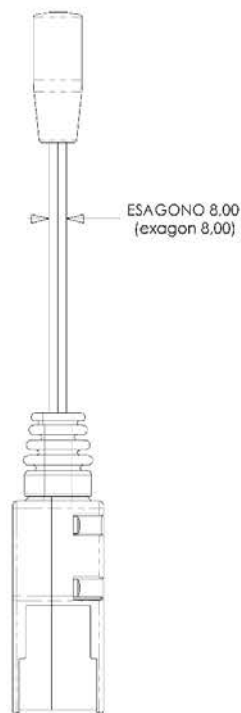
Max Load: 250 N (56 lb)

VERSIONS: - with Anti Reverse lock only code 3076
- both central lock and Anti Reverse code 7004

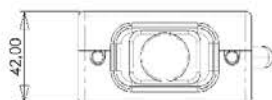




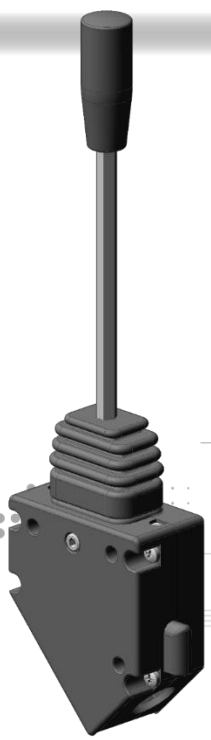
VISTA PARZIALE
(partial view)



Caratteristiche Generali (general specifications)	Valori (data)
CORSA TOT. MAX. (max stroke)	16-16 mm
CARICO DI LAVORO MAX. SUL CAVO (working max load on cable)	250 N
RAPPORTO DI LEVA (lever ratio)	7:1
TEMPERATURA OPERATIVA (working temperature area)	+20° - +80° C
LUBRIFICAZIONE (lubrication)	IPIS 2000
TOLLERANZE GENERALI LINEARI (where not indicated): FINO A 100 ± 0.15 OLTR. ± 0.15 % (general linear tolerances (where don't indicate): until 100 - 0.15 over ± 0.15 %)	
TOLLERANZE GENERALI ANGOLARI (where not indicated): ± 0.5° (general angular tolerances (where don't indicate): ± 0.5°)	



B	07/02/16	modif.: sostituito soffiello IC-3539 con IC-8577; R.d.M. n°1087/14.
A	13/06/05	modif.: modificata altezza 228, era 231,5; agg. tabelle caraff.; agg. disegno; R.d.M. n° 142/05.
REVISIONE	DATA	MODIFICAZIONE
1	07/02/16	DESCRIZIONE DELLA MODIFICAZIONE
INDEMAR INDUSTRIALE Via Costalova 5 16012 Busalla (GENOVA) Tel. 010-96.48.712 / Fax. 010-96.48.057 http://www.indemar.it/ mailto:info@indemar-industriale.com		
PRODOTTO DA	TEAVESIO	TRAVESIO
CONFEZIONATO DA	EDICOTARCO	
PRODOTTO IN	ITALIA	A3
RIPRODUZIONE VIETATA (all rights reserved)		
DESCRIZIONE (short or long)		NUMERO DI DELEGATO (drawing number)
IS		LEVA LLVC STANDARD
3430		3430
SCALA 1:1.5 (drawing)		PRODOTTO IN ITALIA (produced in Italy)

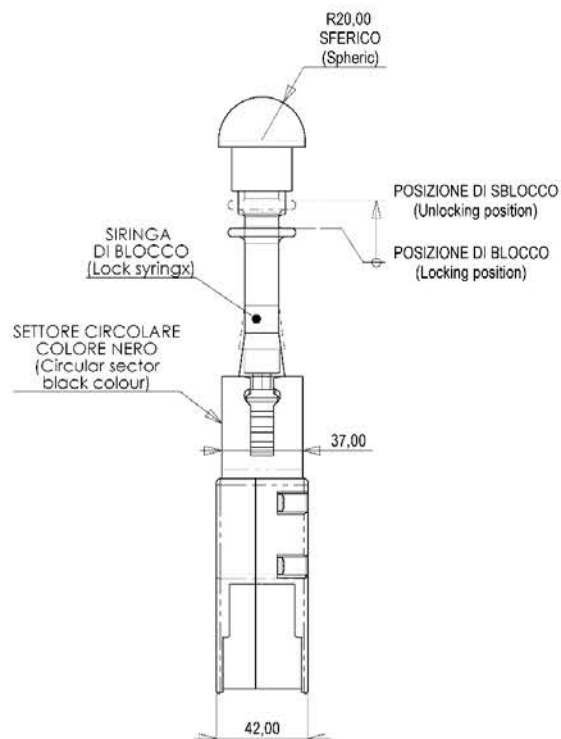


Description: single axis lever, general purpose, replaces most popular LLVC

Features: robust, stackable, perfected for duration and reliability, long stroke.

Weight: 0,8 Kg (1,7 lb)
Sizes (body): 99x80x42 mm (3,89x3,15x1,65 inch)
Total Stroke: 32 mm (1,25 inch)
Max Load: 250 N (56 lb)





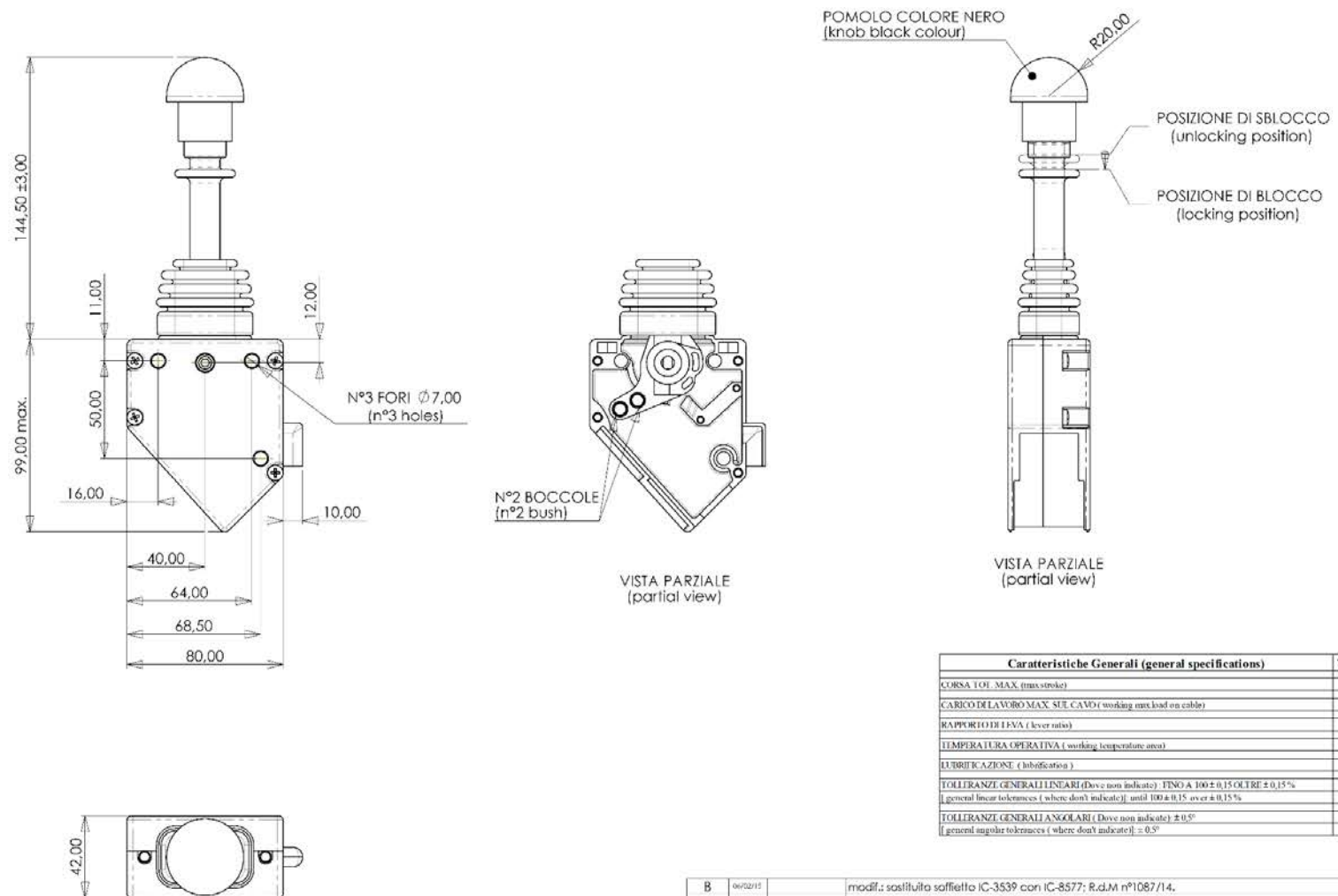
Caratteristiche Generali (general specifications)	Valori (data)
GRUPPO TOT. MAX. (max. struts)	84 mm
CARICO LAVORO MAX. SUL CAVO (working load on cable)	250 kg
RAPPORTO DILATA (lever ratio)	5.5 : 1
TEMPERATURA OPERATIVA (working temperature zone)	-30° - +80°
LUBRIFICAZIONE (lubrication)	HR5 200
<p>INDICAZIONE GENERALI (GENERAL INDICATOR) (does not indicate): FINO A 100 x 0,15 (100 x 0,15 %)</p> <p>(general lines (indicates where does not indicate) (does not indicate) 100 x 0,15 (100 x 0,15 %)</p>	
<p>INDICAZIONE GENERALI (GENERAL INDICATOR) (does not indicate): 0,50*</p> <p>(general lines (indicates where does not indicate) (does not indicate) 0,50*</p>	

Caratteristiche Generali (general specifications)	Valori (data)
GRONA TOT. MAX (max stretch)	84 mm
CARICO LAVORO MAX SUL CAVO (working load on cable)	250 kg
RAPPORTO DI FIVIA (lever ratio)	5.5 : 1
TEMPERATURA OPERATIVA (working temperature zone)	-30° - +80°
LUBRIFICAZIONE (lubrication)	HR5 200
<p>INDICAZIONE GENERALI INFRARUB (do not indicate): FIMO A 100 x 0,15 (10 x 0,15 %)</p> <p>(general lines (brackets) where data (brackets) 100 x 0,15 area 0,15 %)</p>	
INDICAZIONE GENERALI INFRARUB (do not indicate): FIMO A 100 x 0,15 (10 x 0,15 %)	

[illegible]

Features: robust, all metal, stackable, perfected for duration and reliability, long stroke.

Weight:	0,8 Kg	(1,7 lb)
Sizes (body):	99x80x42 mm	(3,89x3,15x1,65 inch)
Total Stroke:	32 mm	(1,25 inch)
Max Load:	250 N	(56 lb)



Caratteristiche Generali (general specifications)	Valori (data)
CORSA TOT. MAX. (max. stroke)	16-16 mm
CARICO DI LAVORO MAX. SUL CAVO (working max load on cable)	250 N
RAPPORTO DI LIVA (lever ratio)	4,5 : 1
TEMPERATURA OPERATIVA (working temperature area)	-30° - +80° C
LUBRIFICAZIONE (lubrication)	IIIIS 2000
TOLLERANZE GENERALI LINEARI (Dove non indicate) : FINO A 100 ± 0,15 OLTRE ± 0,15 % [general linear tolerances (where don't indicate) : until 100 ± 0,15 over ± 0,15 %	
TOLLERANZE GENERALI ANGOLARI (Dove non indicate) : ± 0,5° [general angular tolerances (where don't indicate) : ± 0,5°	

[illegible]

Description: single axis lever, same as 3430, with central detent and rotating lock

Features: robust, all metal, stackable, easy and safe lock system, long stroke, cable tuning lever side instead of valve side

Weight:	0,8 Kg	(1,7 lb)
Sizes (body):	99x80x42 mm	(3,89x3,15x1,65 inch)
Total Stroke:	32 mm	(1,25 inch)
Max Load:	250 N	(56 lb)

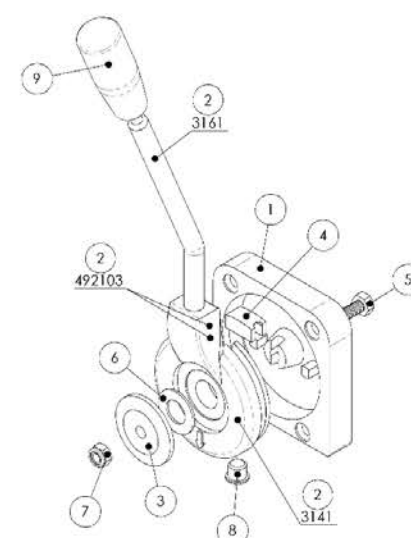


Caratteristiche Generali (general specifications)	Valori (data)
CORSA TOT. MAX. (max.stroke)	70 mm
CARICO DI LAVORO MAX. SUL CAVO (working maxload on cable)	35 Kg/f
RAPPORTO DITIVA (lever ratio)	6,5 : 1
TEMPERATURA OPERATIVA (working temperature area)	-30° - +50° C
LUBRIFICAZIONE (lubrication)	HHS 2000
TOLLERANZE GENERALI LINEARI (Dove non indicate): FINO A 100 ± 0,15 OLTRE ± 0,15 % (general linear tolerances (where don't indicate): until 100 ± 0,15 over - 0,15 %	
TOLLERANZE GENERALI ANGOLI (Dove non indicate): ± 0,5° (general angular tolerances (where don't indicate): ± 0,5°	

 MODELLO 10/07 DATA 15/07/2010 INVALIDITÀ PER IL FISCALISTA		mod. n° 010 e 08; altezza 220 e 218,5 mm; R.d.M. n° 443/07.	
 INDEMAR INDUSTRIALE Via Castalunga 5 16012 Busca (CN/COVA) Tel. 010-96.48.712 / Fax 010-96.48.057 http://www.indemare.it mailto:info@indemare-industriale.com		FISCALITÀ PER IL FISCALISTA TRAVESSO REACTARIO INDEMAR S.p.A. A3	
FISCALITÀ PER IL FISCALISTA TRAVESSO REACTARIO INDEMAR S.p.A. A3		FISCALITÀ PER IL FISCALISTA TRAVESSO REACTARIO INDEMAR S.p.A. A3	
FISCALITÀ PER IL FISCALISTA TRAVESSO REACTARIO INDEMAR S.p.A. A3		FISCALITÀ PER IL FISCALISTA TRAVESSO REACTARIO INDEMAR S.p.A. A3	

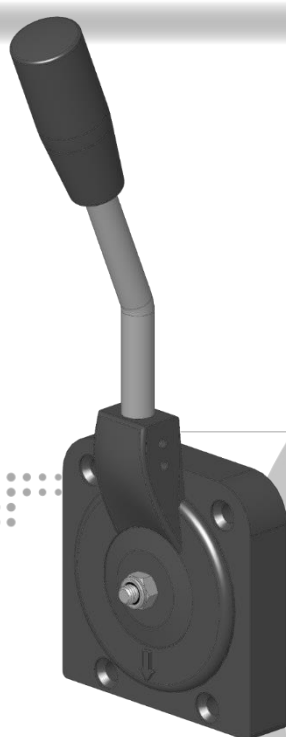


Max Load: 350 N (77 lb)

[illegible]

VISTA ISOMETRICA ESPLOSA
(exploded isometric view)

Caratteristiche Generali (general specifications)	Valori (data)
CORSA TOT. MAX. (max stroke)	80 mm
CARICO DI LAVORO MAX. SUL CAVO (working max. load on cable)	200 N
RAPPORTO DI LEVA (lever ratio)	7:1
TEMPERATURA OPERATIVA (working temperature area)	-50° - 180° C
LUBRIFICAZIONE (lubrication)	HPS 200
TOLLERANZE GENERALI LINEARI (Dove non indicato) - FINO A 100 ± 0.15 (OLTRE ± 0.15 % general linear tolerances (where don't indicate) until 100 ± 0.15 (over ± 0.15 %	
TOLLERANZE GENERALI ANGOLARI (Dove non indicato) ± 0.5°	

[illegible]

Description: Hand Throttle Lever

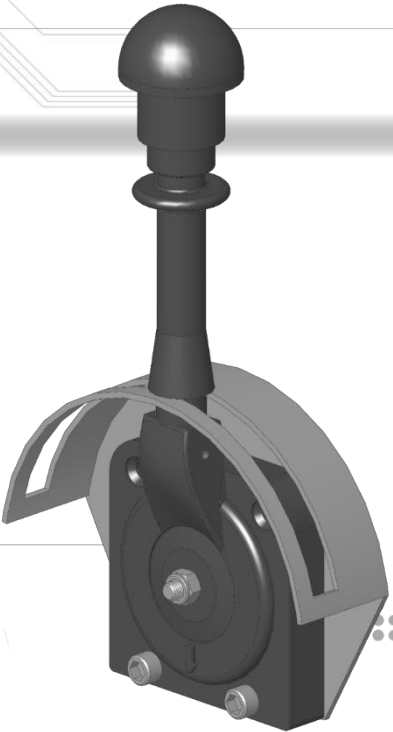
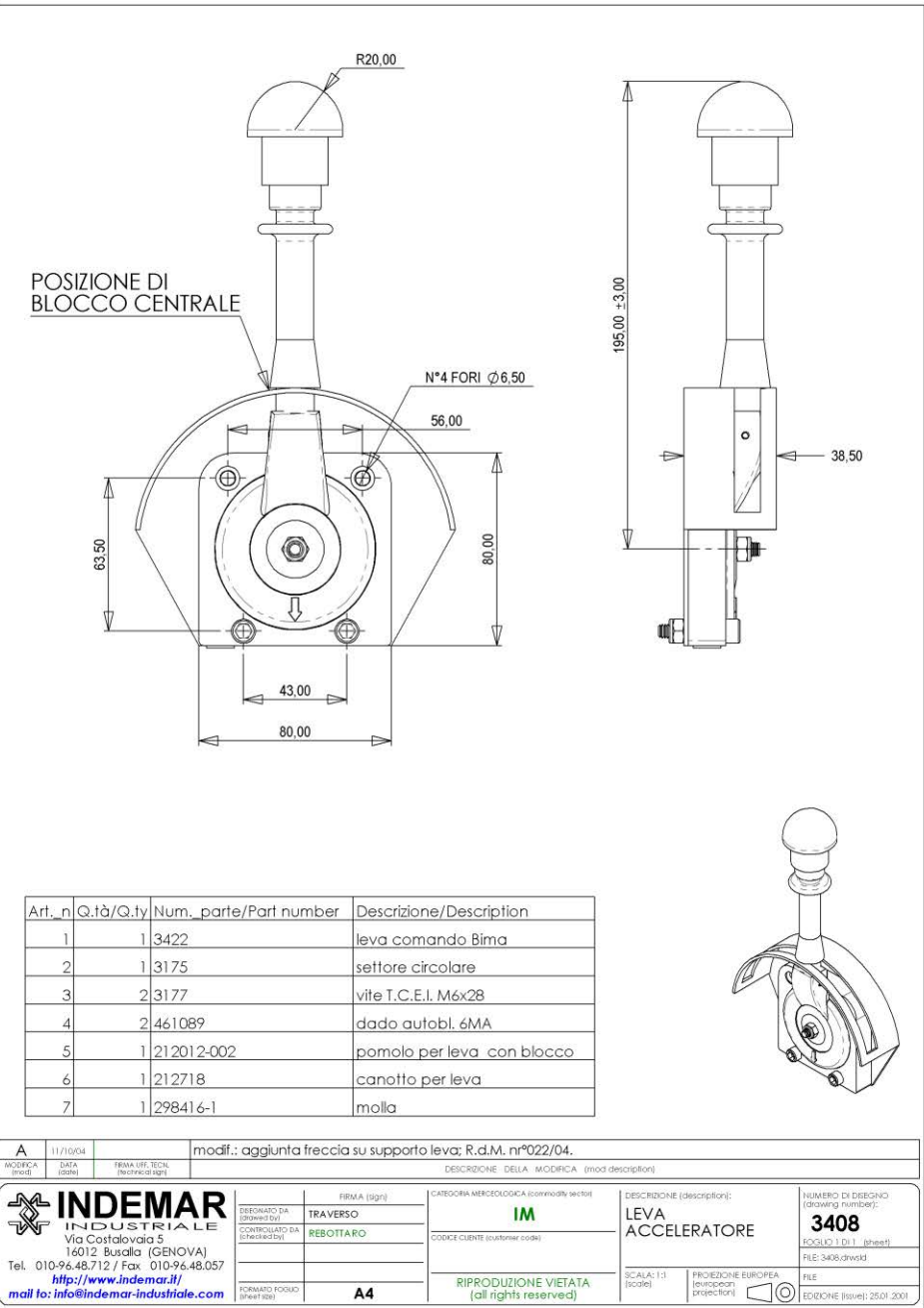
Features: robust, all metal, smooth operation, built to rely upon.

Weight: 0,54 Kg (1,19 lb)

Sizes (body): 80x80x20 mm (3,15x3,15x0,8 inch)

Total Stroke: 80 mm (3,15 inch)

Max Load: 200 N (44 lb)



Description: Throttle Lever with central or any position detents

Features: robust, all metal, smooth operation, built to rely upon.

Weight: 0,5 Kg (1,1 lb)

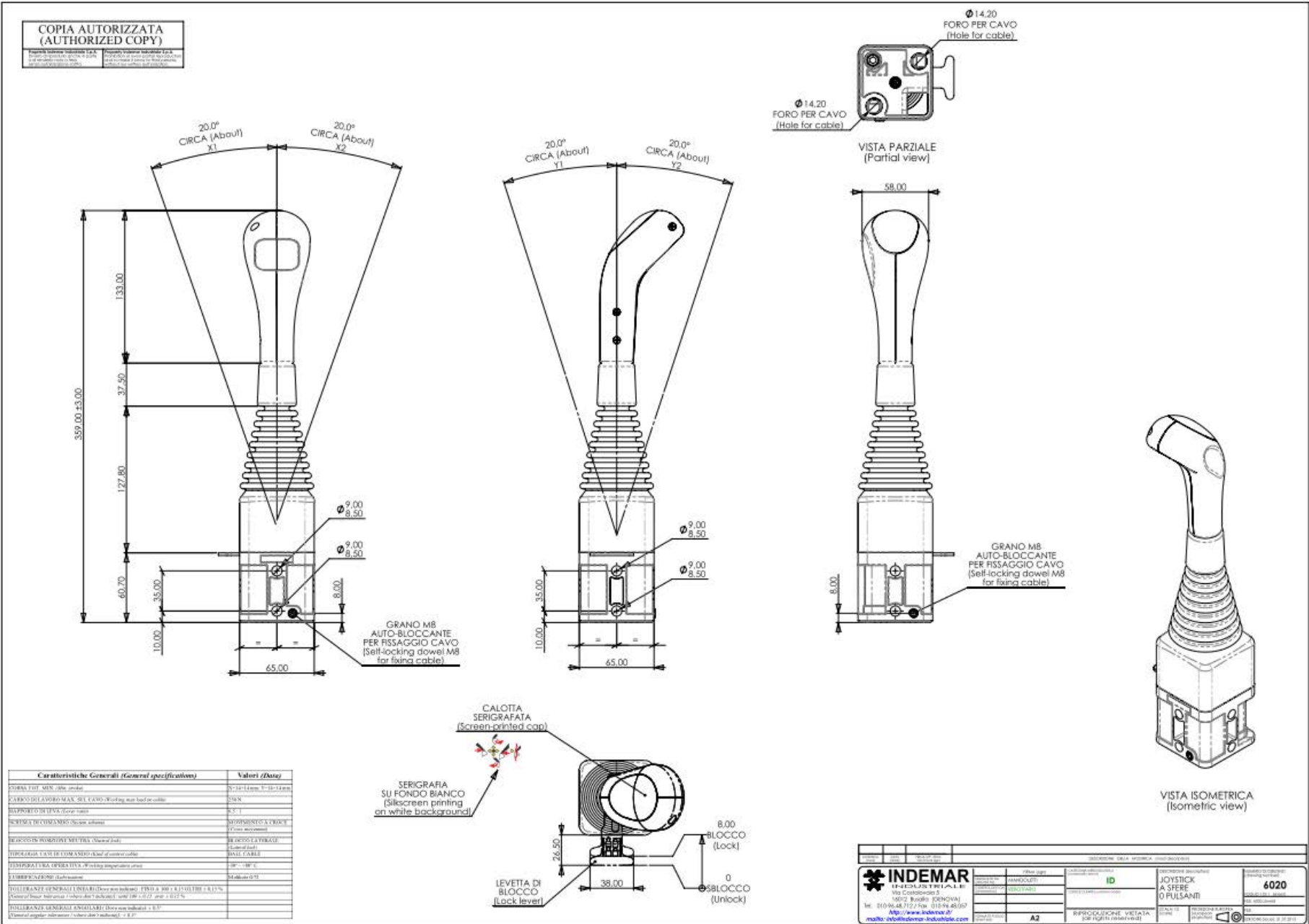
Sizes (body): 80x80x20 mm (3,15x3,15x0,8 inch)

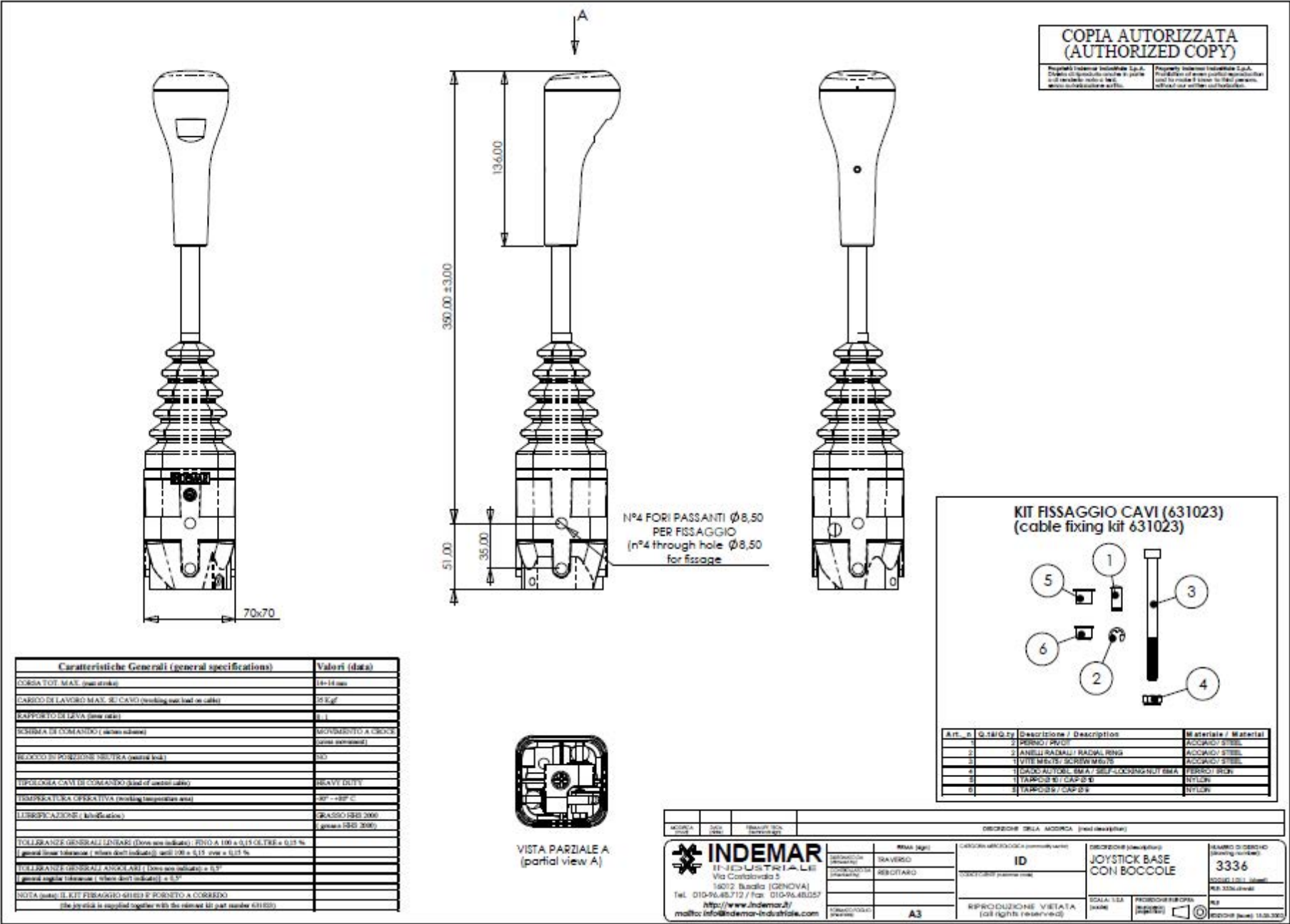
Total Stroke: 80 mm (3,15 inch)

Max Load: 200 N (44 lb)



2. Joysticks





Description: Joystick for heavy duty jobs, standard

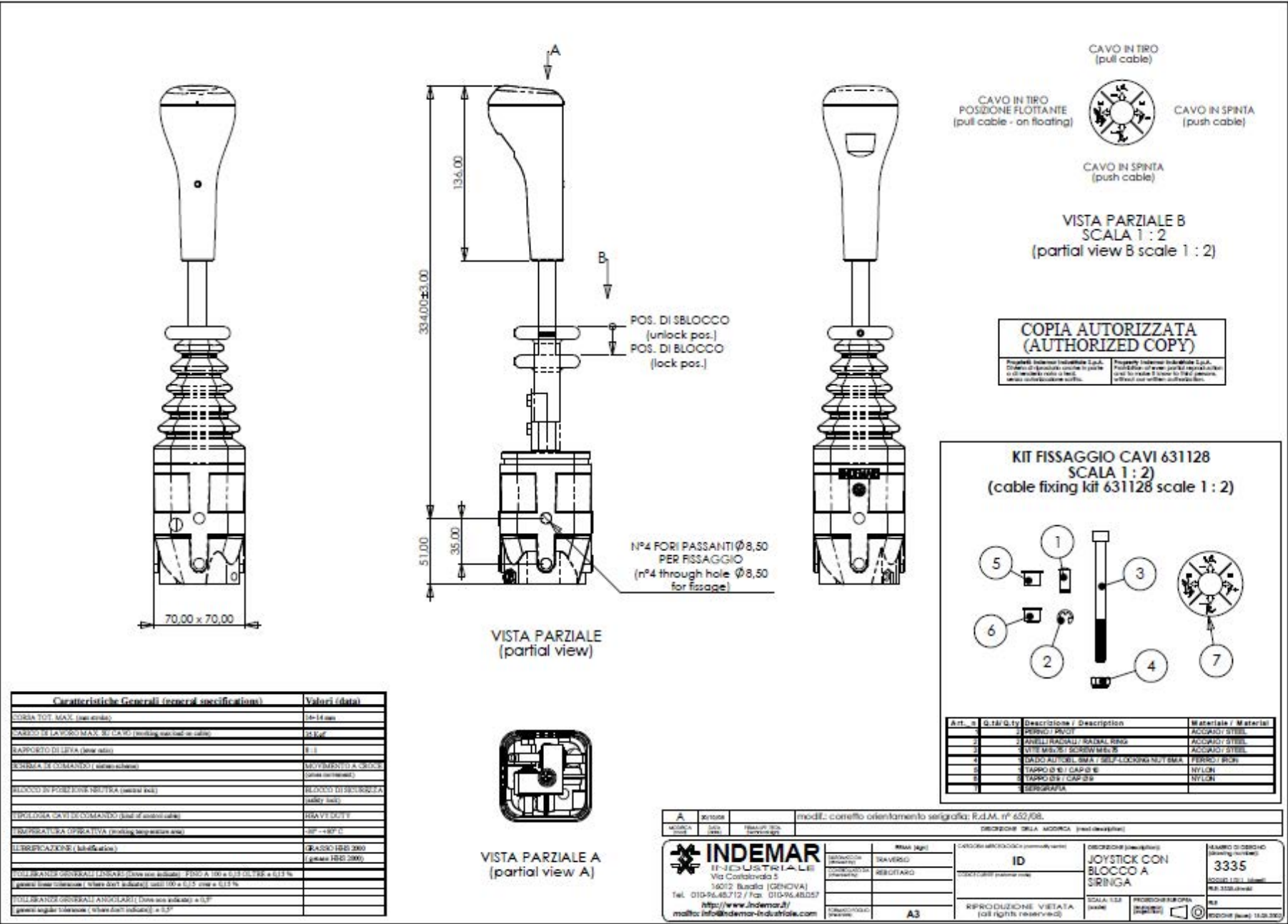
Features: robust, all metal, smooth operation, built to rely upon.

Weight: 1,5 Kg (3,3 lb)

Sizes (body): 80x80x20 mm (3,15x3,15x0,8 inch)

Total Stroke: 28 mm (14+14) (1,10 inch)

Max Load: 250 N (56 lb)



Description: Joystick for heavy duty jobs with rotating pull knob

Features: robust, all metal, smooth operation, built to rely upon, central detent operated by spring loaded knob.

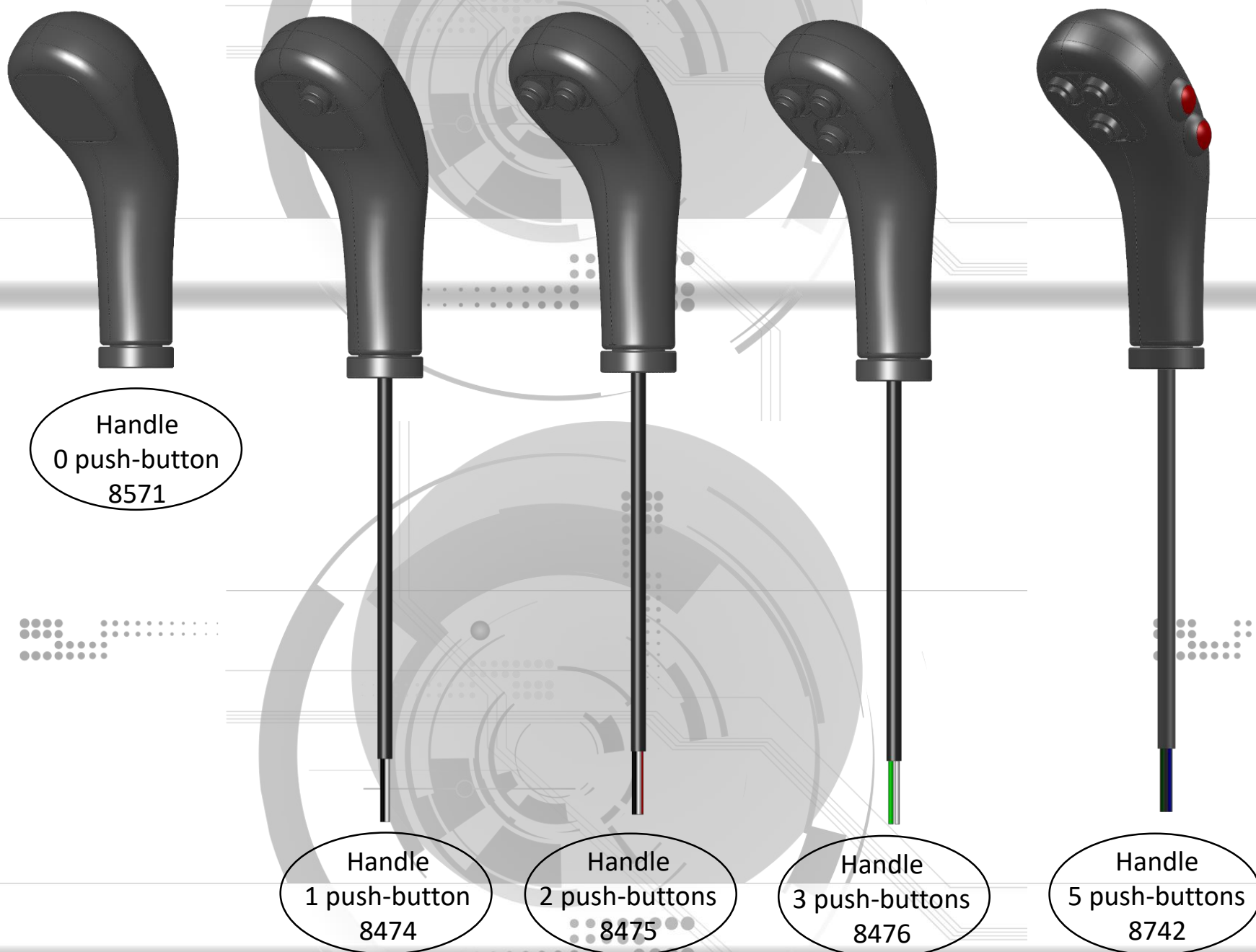
Weight: 1, Kg (3,52 lb)

Sizes (body): 80x80x20 mm (3,15x3,15x0,8 inch)

Total Stroke: 28 mm (14+14) (1,10 inch)

Max Load: 250 N (56 lb)





Various grips for applications, requiring different number and positions of switches.
The wires pass through the joystick stick, for an easy connection.

Ergonomic Grips studied for Comfort, Duration and Ease of Operation

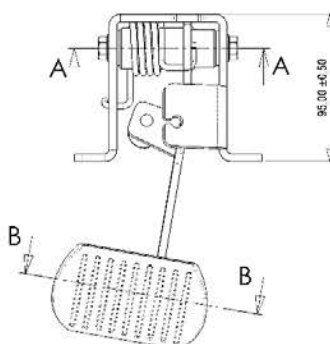
All components are Italian Made.

3. Pedals

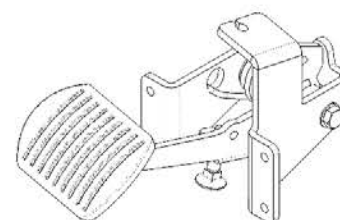


POSIZIONE DI ACCELERAZIONE MASSIMA

COPPIA DI SERRAGGIO: 10 - 12 Nm
(Driving torque: 10 - 12 Nm)

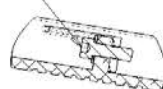
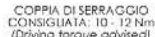


Art. n.	Q.W.O. / V.	Num. parte/Part number	Descrizione/Description	Materiale/Material	Trattamento/Treatment
1	1	3813	Supporto pedale	Fe P11	Zincatura bianca Fe/Zn 7 II
2	1	3814	Pedaler	Fe P11 / 95MnPb28	Cataphoresis nera / Black cataphoresis
3	1	3835	Pedelleria removibile	Legni Al	Ossidazione anodica semi-duro colore nero
4	2	3818	Boccola ligue MFM 1218 20	lghler M/250	
5	1	3817	Perno pedale	95MnPb28	Zincatura bianca Fe/Zn 7 II
6	2	3816	Vite T.C.E. M8x16 UNI 4017	Acciaio 8.8	Zincatura gialla Fe/Zn 12 IV
7	2	3819	Rondella ondulata UNI 8840 forma B	Acciaio UNI 7064	Zincatura bianca Fe/Zn 7 II
8	1	3819	Moletta a torsione	Acciaio C285	Zincatura bianca Fe/Zn 7 II + desborstizzazione
9	1	8431	Vite M8x40 UNI 0736	Acciaio 4.8	Zincatura bianca Cr3 + Fe/Zn 3Cr1A
10	1	462225	Dado M8x basso UNI 4035	Acciaio 8.8	Zincatura bianca Fe/Zn 7 II
11	1	3885	Vite T.C.E. I. M8x26 ISO 4762	Acciaio 8.8	Zincatura bianca Fe/Zn 7 II
12	1	428482	Rondelli corticali M8	Acciaio	Zincatura gialla Fe/Zn 13 IV

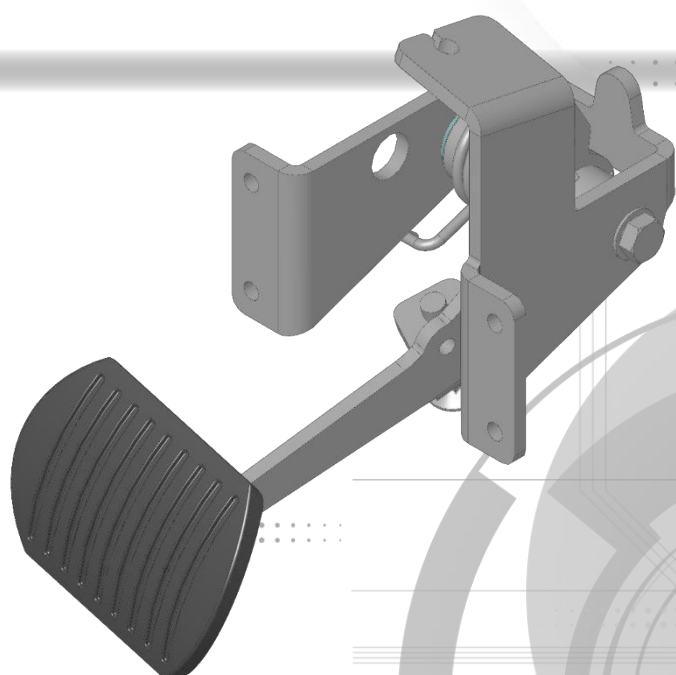


VISTA ISOMETRICA
(Isometric view)

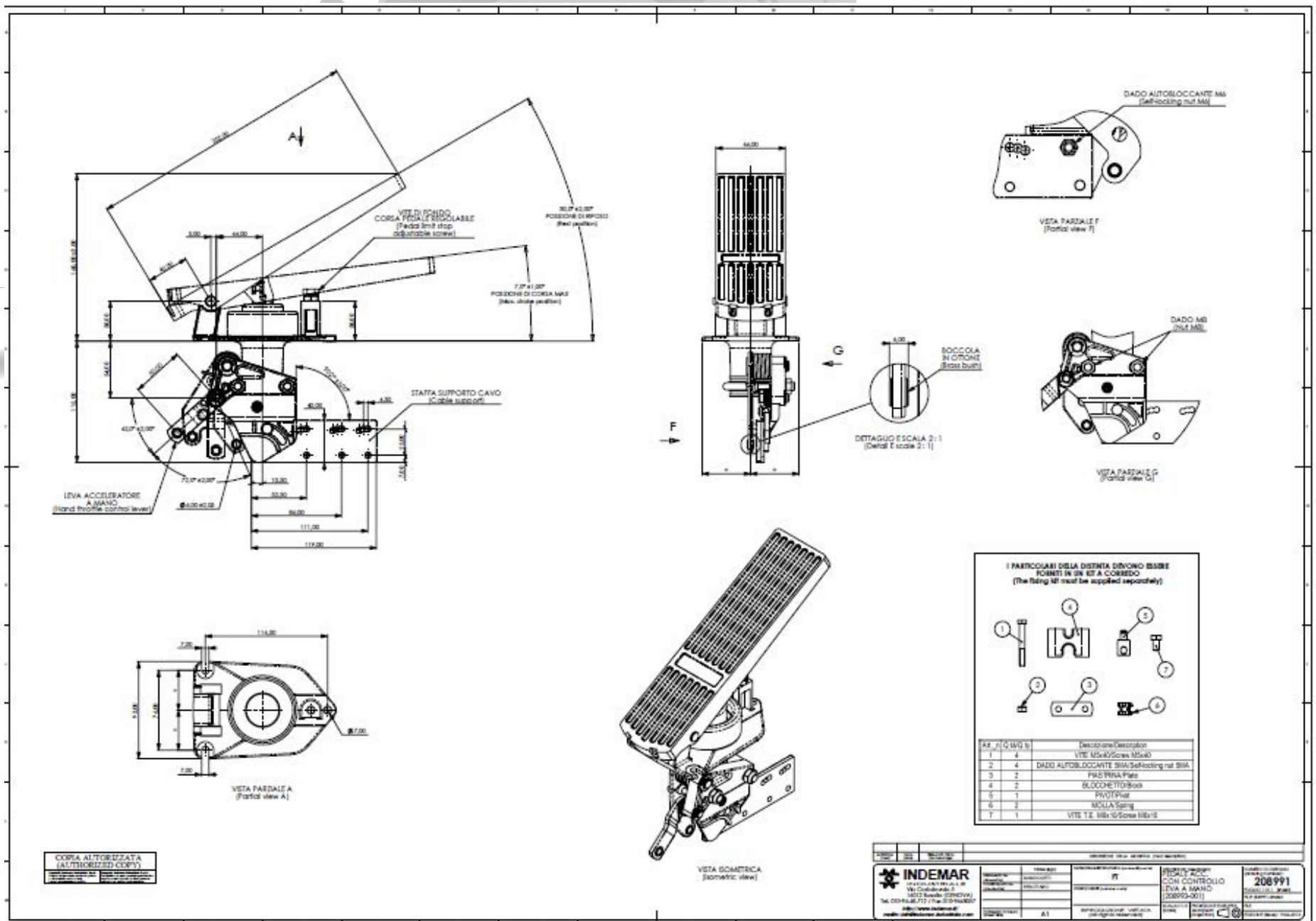
Caratteristiche Generali (general specifications)	Valori (data)
CORSA TOT. MAX. (max. stretch)	28 mm
CARICO DI LAVORO MAX. SUL CAVO (working load limit on cable)	300 N
RAPPORTO DI LEVA (Lever ratio)	2.5 : 1
TEMPERATURA OPERATIVA (working temperature area)	-50° - +60° C
LUBRIFICAZIONE (lubrication)	
TOLLERANZE GENERALI LINEARI (Dowc non indicative) ITNO A 100 ± 0,15 CLTIR ± 0,15 % (general linear tolerances (where dots indicated), until 100 ± 0,15 over - 0,25 %)	
TOLLERANZE ANGOLI E NCOLI ARI (Dowc non indicative) ± 0,5° (general angles tolerances (where dots indicated) ± 0,5°)	



SEZIONE B-B
(Section B-B)

[illegible]

Max Load: 300 N (67,4 lb)



Description: Floor mount throttle pedal.

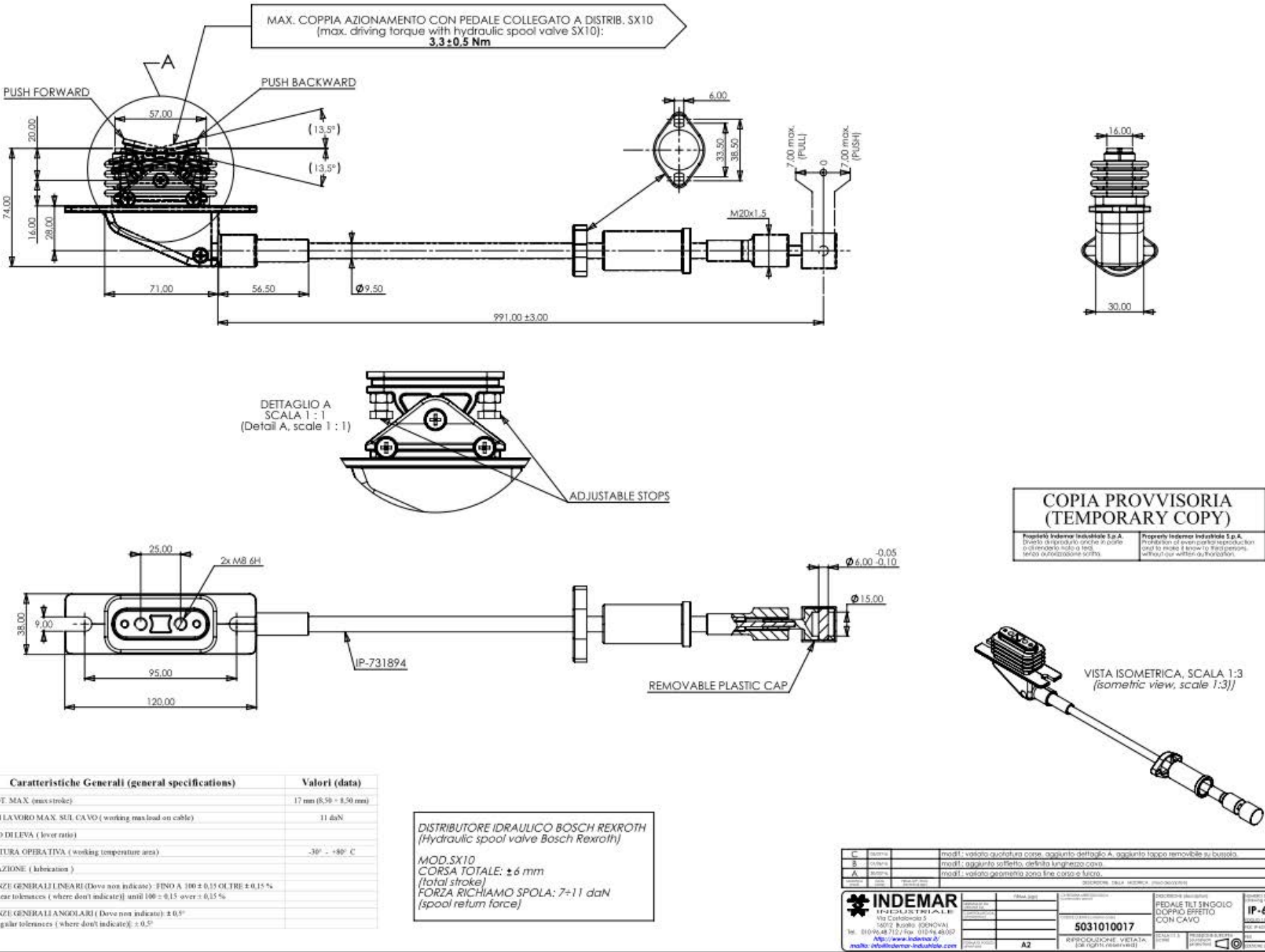
Features: body in metal, robust and comfortable for many hours of work

Weight: 1,4Kg (3,1 lb)

Sizes (body): 280x199x66 mm (11x7,8x2,5 inch)

Total Stroke: 28 mm (1,10 inch)

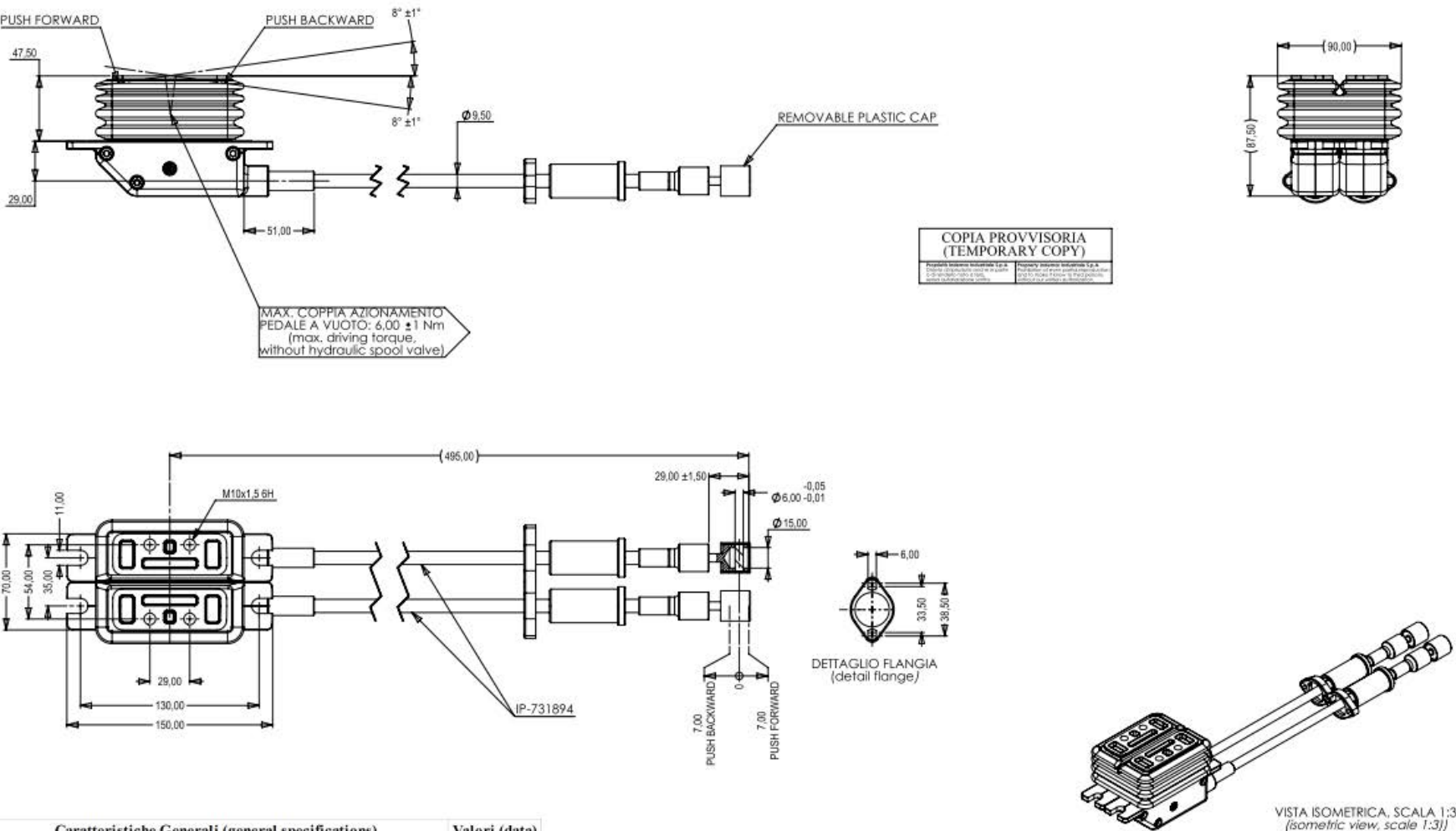
Max Load: 300 N (67,4 lb)



Description: rocker pedal (tip-toe)

Features: body in metal, robust unique in the market, highly innovative

Weight: 1,0Kg (3,1 lb)
Sizes (body): 74x38x74 mm (2,9x1,5x2,9 inch)
Total Stroke: 17 mm (0,66 inch)
Max Load: 110 N (24,2 lb)

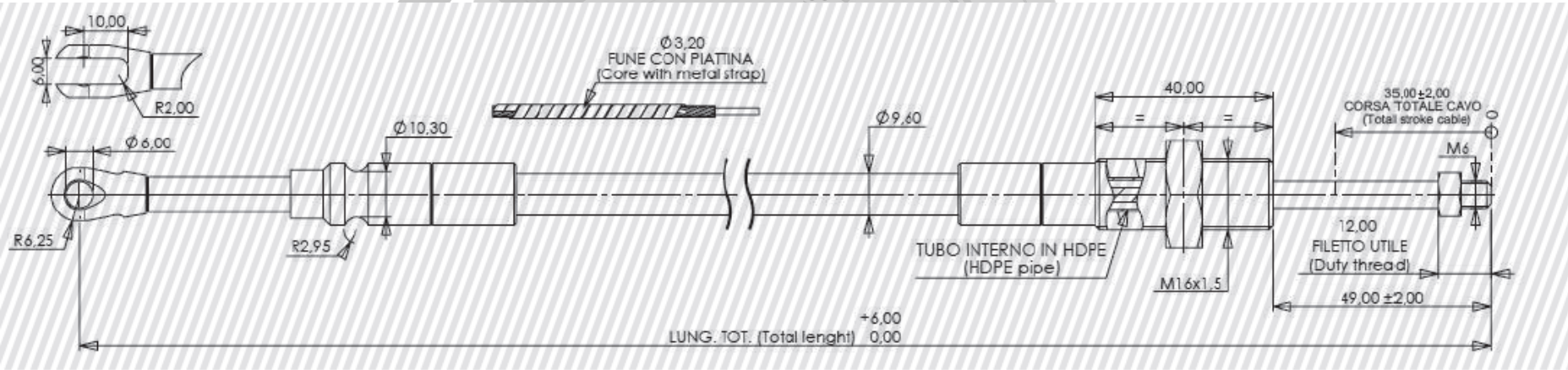


Description: double rocker pedal (tip-toe)

Features: body in metal, robust unique in the market, highly innovative

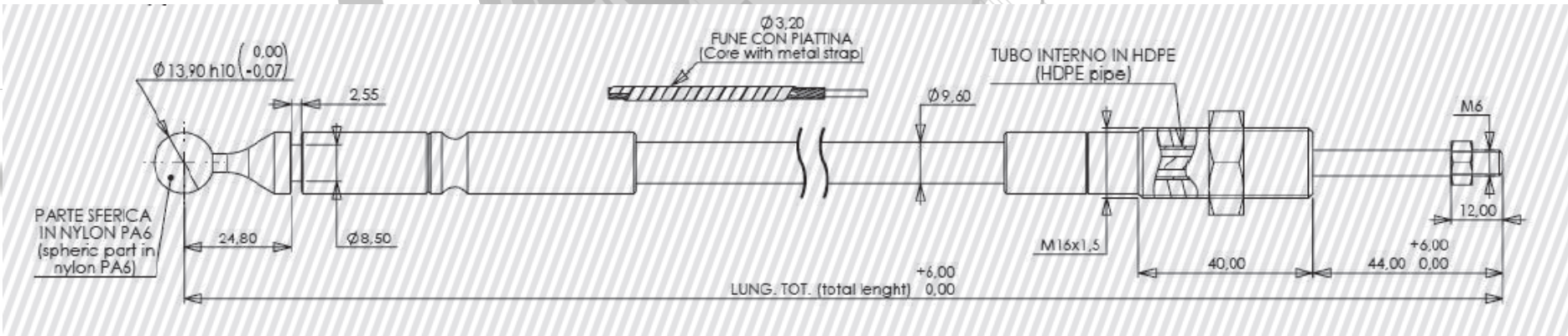
Weight: 1,0Kg (3,1 lb)
Sizes (body): 74x76x74 mm (2,9x2,99x2,9 inch)
Total Stroke: 14 mm (0,57 inch)
Max Load: 110 N (24,2 lb)

4. Cables & Fittings



Description: Push Pull Cable for Heavy Duty Joysticks and Single Levers
Features: Unrivaed smooth operation minimal backlash and top strength, tested 100% in house

Total Stroke: 39 mm (1,53 inch)
Maximum fitted Load: 3000 N (672 lb)
Minimum Radius: 200 mm (7,87 inch)
Operating Temperature: -30 / +80 °C (0/+176 °F)



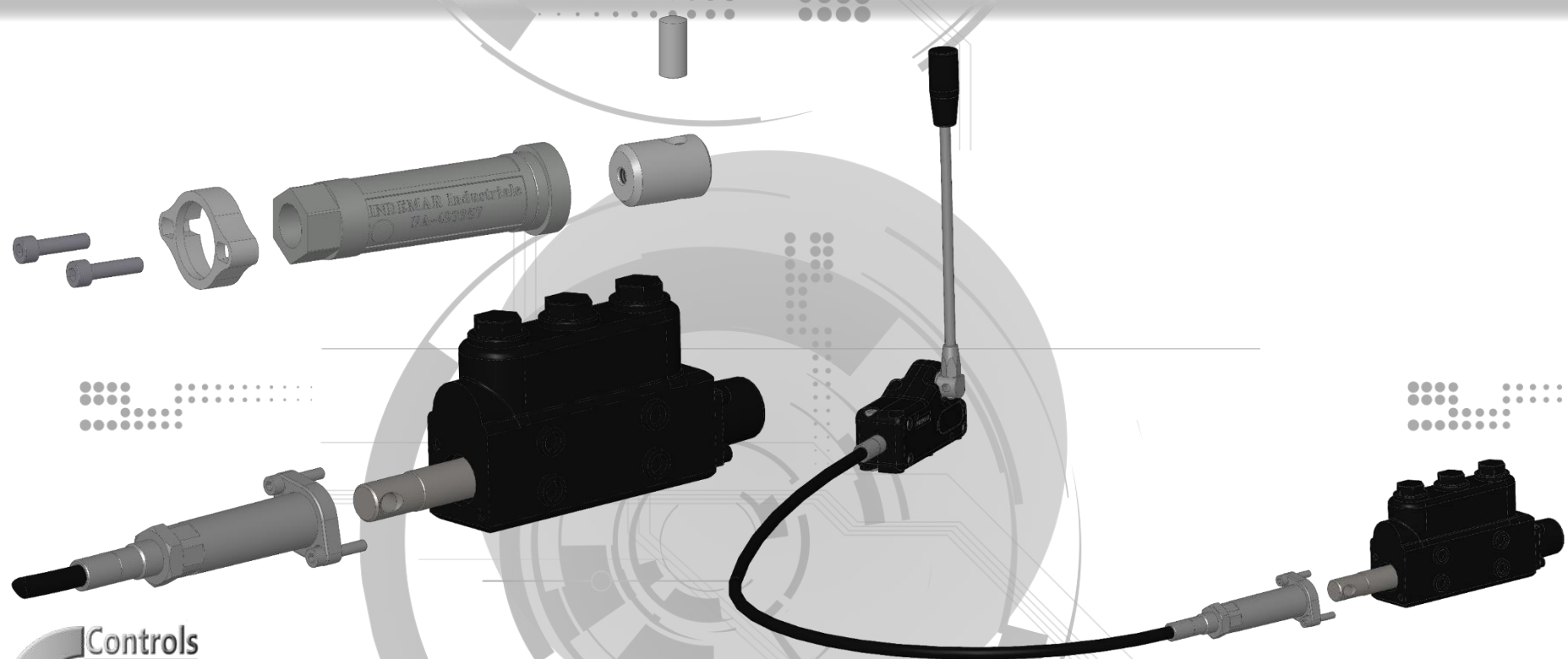
Description: Push Pull Cable for Standard Joysticks
Features: Unrivaed smooth operation minimal backlash and top strength, tested 100% inhouse, Nylon pivot sphere.

Total Stroke: 34 mm (1,34 inch)
Maximum fitted Load: 3000 N (672 lb)
Minimum Radius: 200 mm (7,87 inch)
Operating Temperature: -30 / +80 °C (0/+176 °F)

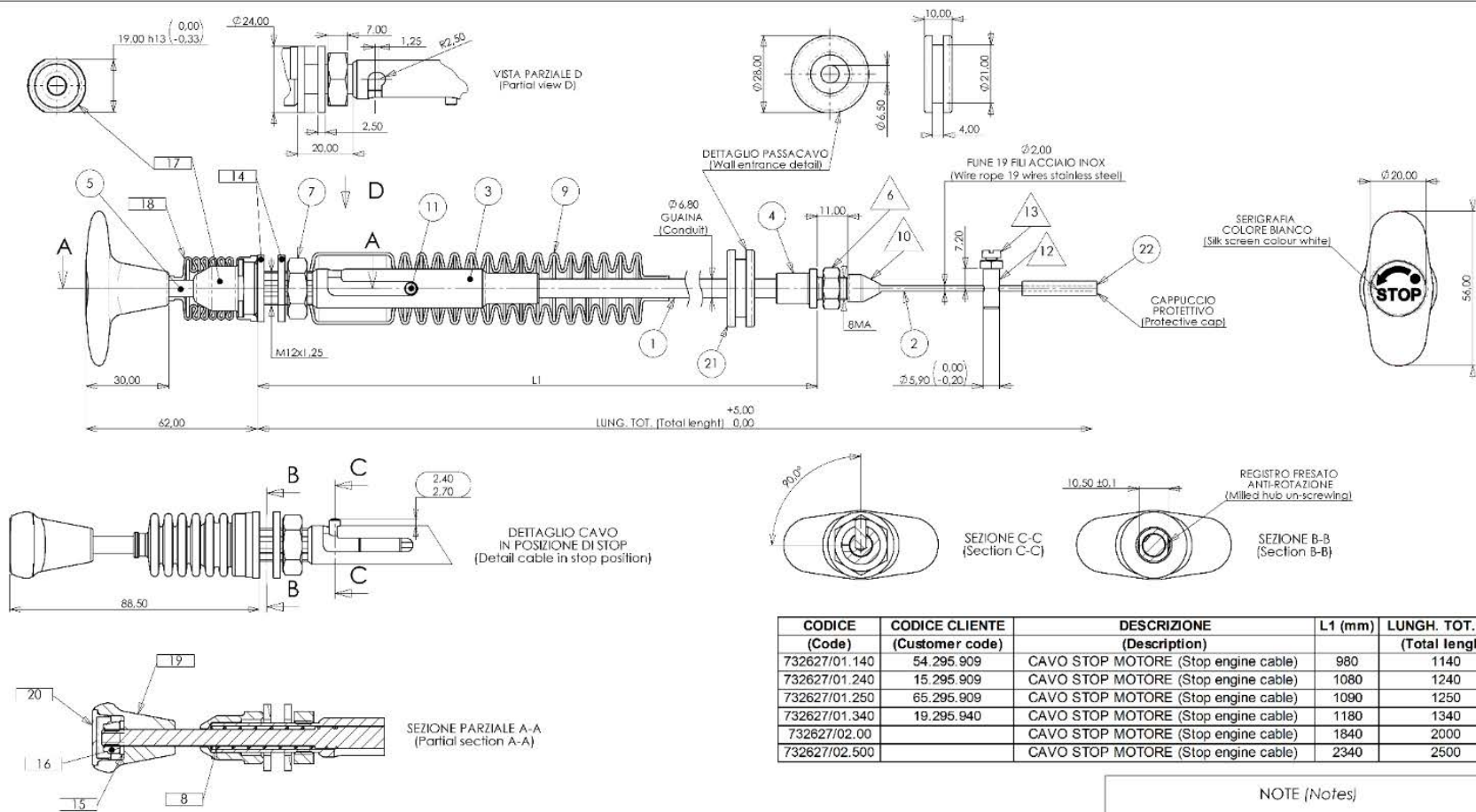
CODICE (PART NUMBER)	DISTRIBUTORE IDRAULICO (HYDRAULIC DISTRIBUTOR)	PRODUTTORE (MANUFACTURER)
FK-211710	HCD2	HYDROCONTROL
FK-212071	HCD4	HYDROCONTROL
FK-212107	TR-55	HYDROCONTROL
FK-211623	SD 4/5/6	WALVOIL
FK-212053	SD 10/11/14	WALVOIL
FK-212059	SD 8	WALVOIL
FK-212056	VD06	SALAMI
FK-212065	BM-70	BLB
FK-212042	DN-BLB	DINOIL
...
...

Description: All major valve manufacturers are connectable to INDEMAR cables and levers through the kits provided. Both Metrical and Imperial sizes are available.

Features: Made in Italy for reliability and duration



4. Other Controls



CODICE (Code)	CODICE CLIENTE (Customer code)	DESCRIZIONE (Description)	L1 (mm)	LUNGH. TOT. mm (Total length)
732627/01.140	54.295.909	CAVO STOP MOTORE (Stop engine cable)	980	1140
732627/01.240	15.295.909	CAVO STOP MOTORE (Stop engine cable)	1080	1240
732627/01.250	65.295.909	CAVO STOP MOTORE (Stop engine cable)	1080	1250
732627/01.340	19.295.940	CAVO STOP MOTORE (Stop engine cable)	1180	1340
732627/02.00		CAVO STOP MOTORE (Stop engine cable)	1840	2000
732627/02.500		CAVO STOP MOTORE (Stop engine cable)	2340	2500

NOTE (Notes)

FORNIRE I SEGUENTI KIT IN DUE DIFFERENTI SACCHETTI:
(To supply following kits in two different bags)

PARTICOLAR 1, 10, 11, 12, 13, 14, 15, 16, 17, 18, 19, 20 SONO FORNITI SEPARATEMENTE
(The parts 1, 10, 11, 12, 13, 14, 15, 16, 17, 18, 19, 20 are supplied separately)

I PARTICOLARI 8, 14, 15, 16, 17, 18, 19, 20 SONO FORNITI SEPARATEMENTE
(The parts 8, 14, 15, 16, 17, 18, 19, 20 are supplied separately)

Caratteristiche Generali (general specifications)	Valori (data)
CORSA TOT. MAX. (max stroke)	27 mm
RAGGIO MIN. DI CURVA (min. bending radius)	200 mm
CARICO DI COLLAUDO TERMINALI FUNE (test load of wire rope terminal)	800 N
CARICO DI COLLAUDO TERMINALI GUAINA (test load of conduit terminal)	200 N
CARICO MIN. DI SFILAMENTO TERMINALI FUNE (disconnection load of wire rope terminal)	1500 N
CARICO MIN. DI SFILAMENTO TERMINALI GUAINA (disconnection load of conduit terminal)	300 N
DISINCRONISMO A RIPOSO (cable drooping at rest)	
TEMPERATURA OPERATIVA (working temperature area)	-30° - +80° C
RENDIMENTO - 0,53 OGNI CURVA DI 90° efficiency: 0,53 each bending of 90°	
DIFFERENZIAZIONE (differentiation)	Multikote 172
TOLLERANZE GENERALI LINEARI (Dimension indicated): FINO A 100 ± 0,15 OLTRE ± 0,15 % [general linear tolerances (where not indicated): until 100 ± 0,15 over ± 0,15 %]	
TOLLERANZE ANGOLI ANGOLI ANGOLI (Dimension indicated): ± 0,5° [general angular tolerances (where not indicated): ± 0,5°]	

Art. n°	Q.tà	Q.tà	Num. parte/Part number	Descrizione/Description	Materiale/Material	Trattamento/Treatment
1	1	1	416308	Guaina/Conduit	Acciaio + PERD colore nero/Steel+PERD black colour	
2	1	1	421038	Fune Ø19 Wire rope Ø19	Acciaio/Steel	
3	1	1	435646	Mozza M12x1,25 Nut M12x1,25	SSA/PA28	Zinc. bianca/Zinc. white
4	1	1	436739	Mozza BMA/Hub BMA	SSA/PA28	Zinc. gialla/Zinc. yellow
5	1	1	440625	Assia/Rod	Acciaio inox AISI 302/Inox steel AISI 302	
6	1	1	463023	Dado BMA/Nut BMA	Acciaio/Steel	
7	1	1	462689	Dado M12x1,25/Nut M12x1,25	Acciaio/Steel	
8	1	1	466758	Molla/Spring	Acciaio armonico C80/Steel C85	
9	1	1	466448	Selflocking/Bellows	VITD 10 30040	
10	1	1	465224	Pano polare/Dust cover	NBR	
11	1	1	465548	Spina di 10 Pin di 10	SSA/PA28	
12	1	1	465581	Pin	SSA/PA28	
13	1	1	465582	Vite M4x14/Screw M4x14	Acciaio/Steel	
14	2	1	472688	Rondella M12/Washer M12	Acciaio/Steel	
15	1	1	472510	Rondella/Washer	Acciaio/Steel	
16	1	1	461089	Dado M6 autobloccante/Selflocking nut M6	Acciaio/Steel	
17	1	1	466647	Dado speciale/Special nut	SSA/PA28	
18	1	1	465553	Selflocking/Bellows	EPDM 45 colore nero/EPDM black colour	
19	1	1	465553	Corpo mangia/Body handle	Nylon PA6 rosso RAL 3020/Nylon PA6 red colour RAL 3020	
20	1	1	466627	Calestra/Cap	Nylon PA6 rosso RAL 3020/Nylon PA6 red colour RAL 3020	
21	1	1	466717	Passacavo/Pull lead	PVC colore nero/PVC black colour	
22	1	1	497608	Capuccio protettivo/Protective cap	EPDM colore nero/EPDM black colour	

F	1	1	465553	modif: inserita nuova lunghezza B-732627/02.000 4.4 M.M. n° 100/14.
E	1	1	465553	modif: inserita nuova lunghezza B-732627/02.000 4.4 M.M. n° 99/13.
D	1	1	465553	modif: inserita nuova lunghezza B-732627/02.000 4.4 M.M. n° 98/13.
C	1	1	465553	modif: inserita nuova lunghezza B-732627/01.140 4.4 M.M. n° 80/11.
B	1	1	465553	modif: inserita nuova lunghezza B-732627/01.240 4.4 M.M. n° 68/08.
A	1	1	465553	modif: aggiunto foglio di lavoro 2 di 2: 4.4 M.M. n° 58/05.



Description: engine stop, pull only cable and grip with rotation lock

Features: dust protected with long lasting rubbers,

Weight: 0,5 Kg (1,1 lb)
Total Stroke: 27 mm (1,06 inch)
Min Radius: 200 mm (7,8 inch)

